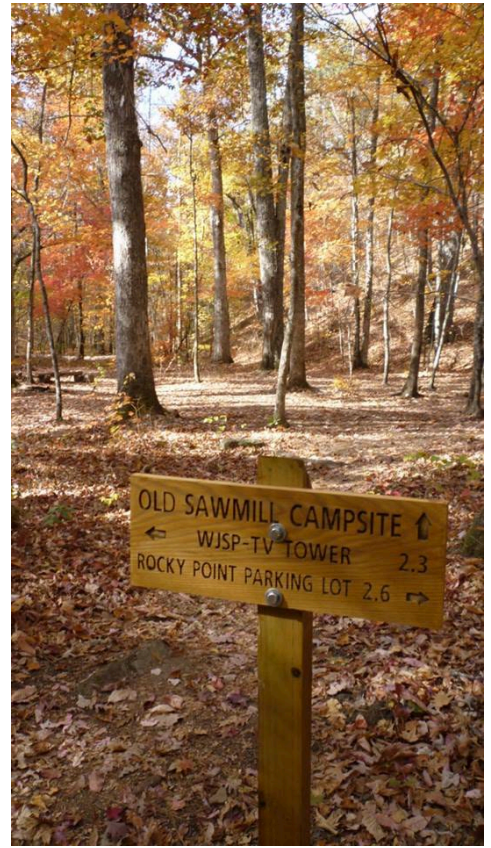


Old Sawmill Campsite

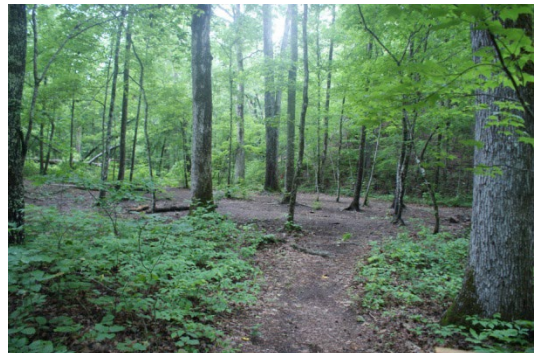
revised 5/25/2024

For many years Old Sawmill Campsite are has been a favorite of Boy Scout groups and individuals wanting a site a couple miles in for a first night place to stay. **June 21, 2014 the site was relocated and on June 13, 2020 site was again move back uphill to the south. The designated campsite and metal fire-ring are 226' off the trail.** Most people hike in to this site area west from the WJSP-TV tower parking lot trailhead (about 2.4 miles.) You will pass Riffle Rocks and Bumble Bee Ridge Campsite.

The hike in to Old Sawmill is one of the most scenic, with lots of hiking over water crossings and hills, past cliffs and waterfalls including Cascade Falls. **An alternate route** is hiking in from the west, and it is about 2.6 miles east of Rocky Point Parking Lot trailhead. The site has the best water source along the trails, this, being a good sized stream alongside the trail on the edge of the camp. The name Old Sawmill, comes from fact there was sawmill located in the woods nearby the campsite about 80+ years ago.



The best access point to the stream as shown is noted with a sign, just 75 feet east past the entrance to the camp.



The old areas of the camp as you come off the trail is marked with signs noting NO FIRES and NO camping.....look for access trail to the campsite and fire-ring to the left about 226' off the PMT.....



Off the PMT 96', Look for this sign on the left (south). **Fire Ring** is just uphill from this sign 130' to the right, with a metal fire-ring





Right west of the entrance to Old Sawmill Campsite is FERNEY the BIG pine tree, 14.5' around at 4' off the ground
Is said to be about 250 years old.

