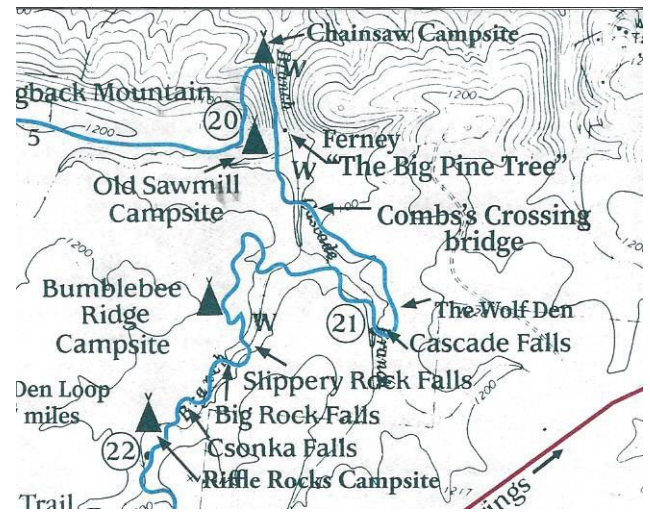


#18 CHAINSAW CAMPSITE -New May 2024

revised 5/8/2024

This site is located just east downhill from Hog Back Mountain/about Mile 20.2 on the PMT. From Rocky Point Parking Lot you can take the PMT east and it is about 2.1 miles. The site is 85' off the north side of the trail some only 226 west of the creek near the "Concrete Dam". There is space for 4 tents (or 2 tents and 2 hammocks) - 8 backpackers and it has a metal fire ring. LOTS of dead downed fire wood all around the little flat area the site is on. You can really hear the water flowing in the nearby creek. This site is west from Mile 23/WJSP TV Tower Trailhead just at 2.8 miles. You go past Riffle Rocks-Bumble Bee Ridge Campsites and then continue on west past Old Sawmill Campsite about .3 of a mile. This site along with 3 other new ones this year are on the new 2024 trail map. As with other campsites, there is an engraved wooden sign and a brown Carsonite sign noting the entrance to the campsite off the Pine Mountain Trail..



Looking east as you approach the site.



Looking west





Eddie Hall on March 20, 2024 helping install fire ring and install signs and post.