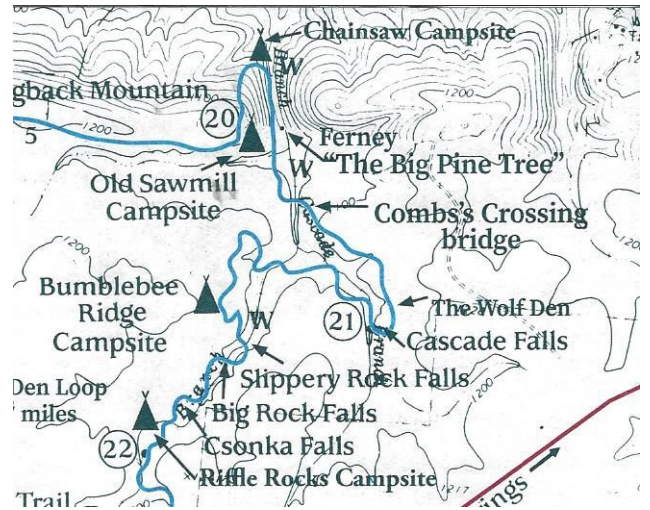


#21 RIFFLE ROCKS CAMPSITE-New May 2024

revised 5/8/2024

From Mile 23/WJSP-TV Tower Trailhead the campsite is only 1.2 miles west. Coming from the west, it is located about Mile 21.8 just east of Csonka Falls where the trail goes through a rocky area. So from Rocky Point Parking Lot it about 3.7 miles. There is space for 4 tents- 8 backpackers (or 2 tents and 2 hammocks) and it has a metal fire ring. Site is located just 57' off the PMT to the west and back on the trail it is only 220' east to water. LOTS of dead downed fire wood all around the little flat area the site is on. You can hear the water flowing in the nearby creek. The site name came from naming the camp in honor of past PMTA board president and awesome volunteer **Mike Riffle** of Cataula. This site along with 3 other new ones are on the 2024 trail map. As with other campsites, there is an engraved wooden sign and a brown Carsonite sign noting the entrance to the campsite off the Pine Mountain Trail...



Looking east. Note: 220' to water

Heading west on PMT



